



FORMATION EVALUATION LOG

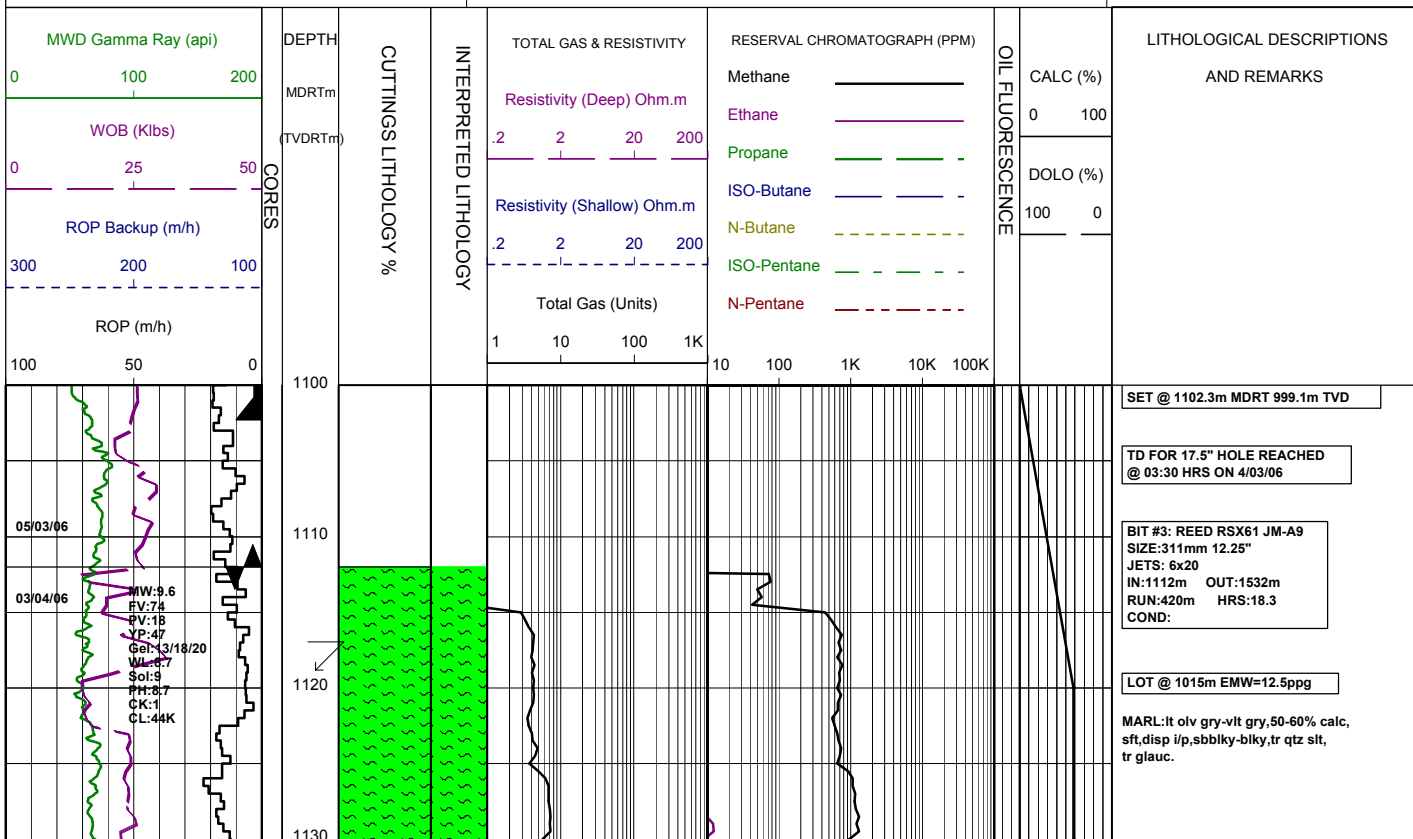


WELL : BASKER3

FROM (m): 1100 TO (m): 1540 SCALE: 1/ 500

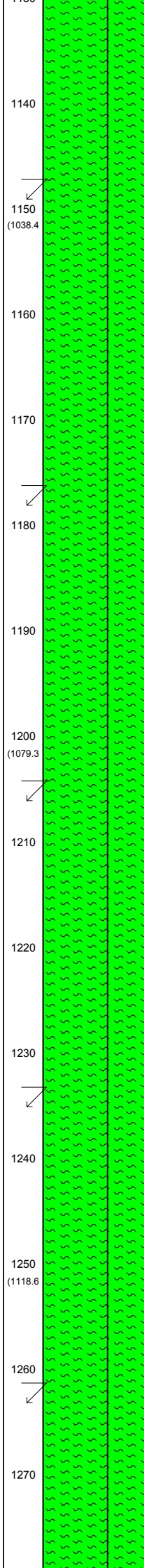
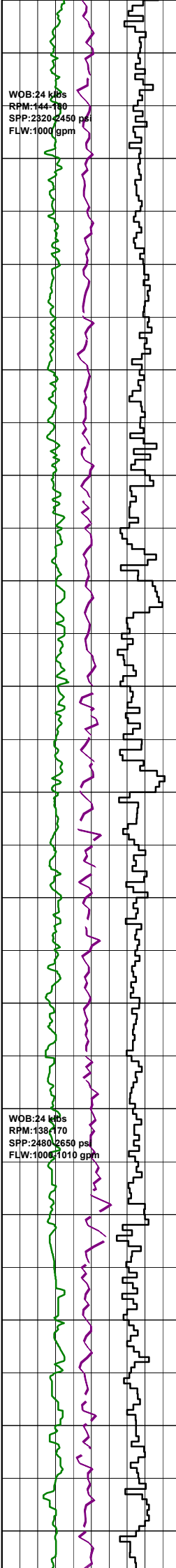
Country : AUSTRALIA	Latitude : 38°18'42.44"S	HOLE / CASING INFO 17 1/2" Hole to (mMDRT) : 1112m	Spud Date : 01-03-2006
Basin : GIPPSLAND	Longitude : 148°43'29.78"E	12 1/4" Hole to (mMDRT) : xxxm	Total Depth Date : xx-03-2006
Field : BASKER	UTM Co-ord X (m E) : 650106.2	13 3/8" Shoe at (mMDRT) : xxx.xm	Total Depth (mRT) : xxxm
Permit : VIC/L26	UTM Co-ord Y (m N) : 5761989.6	9 5/8" Shoe at (mMDRT) : xxx.xm	T.V.D. (mSS MSL) : 3085m
Well Type : DEVELOPMENT	RT-LAT (m) : 21.5		Status : COMPLETED
Rig Name : OCEAN PATRIOT	RT-Seabed (m) : 175.1		

ABBREVIATIONS MW MUD WEIGHT NB NEW BIT FV FUNNEL VISCOSITY RR RERUN BIT PV PLASTIC VISCOSITY CB CORE BIT YP YIELD POINT WOB WEIGHT ON BIT FC FILTER CAKE RPM REVS PER MINUTE SOL SOLIDS FLC FLOW CHECK WL FILTRATE CR CIRCULATE RETURNS SD SAND - % PR POOR RETURNS S SALINITY - PPM NR NO RETURNS RM MUD RESISTIVITY BG BACKGROUND GAS RMF MUD FILTRATE TG TRIP GAS C CARBIDE TEST STG SHORT TRIP GAS LAT LOGGED AFTER TRIP CG CONNECTION GAS DS DEVIATION SURVEY SG SWAB GAS SVG SURVEY GAS		LITHOLOGY LEGEND Claystone Siltstone ar. Silt ar Fine SST Medium SST Coarse SST Marl Clay, Limestone Limestone Dolomite Coal Gypsum Lithic Fragment Foraminifera Fossils Bryozoa Brachiopoda Cement Sponges Glauconite Pyrite Iron Minerals Mica Carb Fragments			ENGINEERING LEGEND Shoe FIT Mud loss Deviation survey DST Mud gain Test Sidewall Core Core RFT	
---	--	--	--	--	---	--



WOB: 24 kN
RPM: 144-180
SPP: 2320-2450 psi
FLW: 1000 gpm

WOB: 24 kN
RPM: 138-170
SPP: 2480-2650 psi
FLW: 1000-1010 gpm



KCL/PHPA/GLYCOL Mud System

MARL: lt olv gry-vlt gry, 50-60% calc, sft-mod hd, sbblky-blky, tr qtz silt, tr carb spk & lam, tr foss, tr glauc.

Survey @ 1148.5m: 34.21° 131.2Az

MARL: lt olv gry-vlt gry, 50-60% calc, sft-mod hd, sbblky-blky, tr qtz silt, tr carb spk & lam, tr foss, tr glauc.

Survey @ 1176.4m: 34.82° 130.13Az

MARL: lt olv gry-vlt gry, 50-60% calc, sft-mod hd, sbblky-blky, tr qtz silt, tr carb spk & lam, tr foram, tr glauc.

Survey @ 1206.0m: 37.04° 128.6°Az

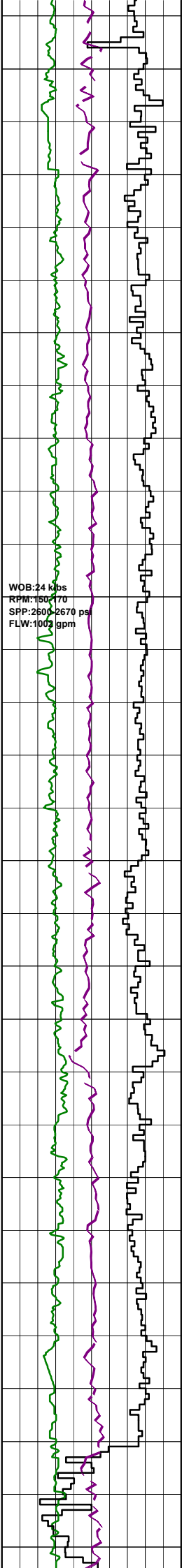
MARL: lt olv gry-v lt gry, 50-60% calc, tr qtz silt tr carb spk & lam, vf qtz grn, tr foram, tr glauc, sft-mod hd, sbblky-blky.

Survey @ 1234.4m: 38.52° 128.8Az

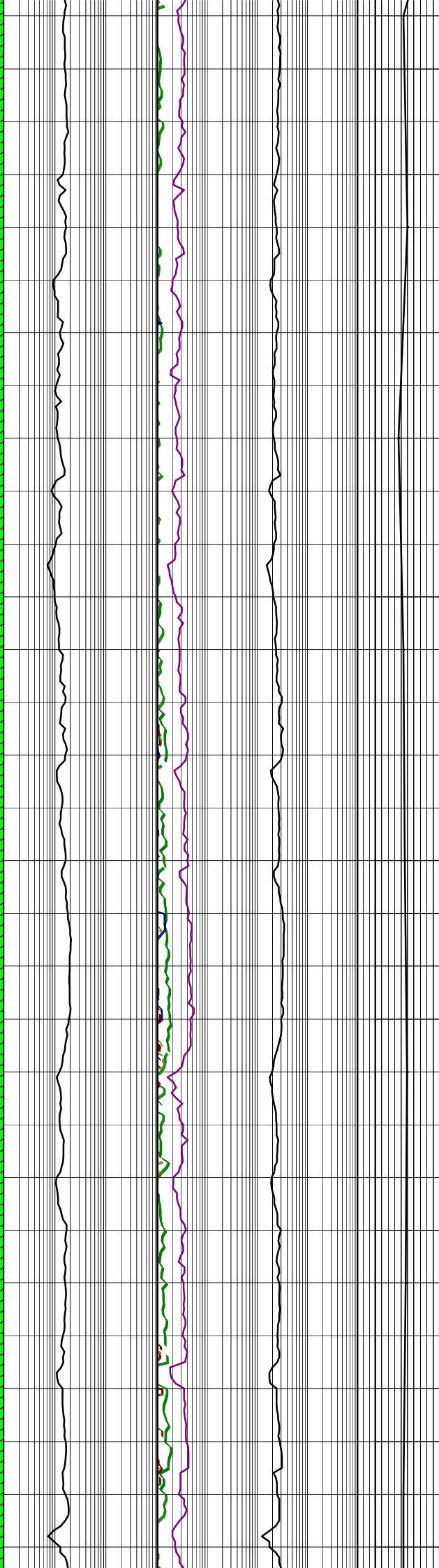
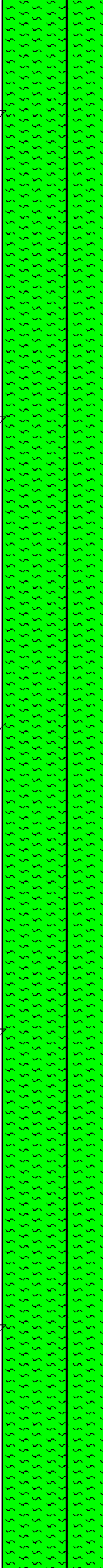
MARL: lt olv gry-v lt gry, 50-60% calc, yel gry, tr qtz silt, tr carb spk, 5-10% vf qtz grn, tr CLCAR, tr glauc, sft-mod hd, tr hd, blky, occ amor.

Survey @ 1262.9m: 40.82° 128.8Az

MARL: lt olv gry, 50-60% calc, tr silt, tr carb spk, tr glauc, tr vf pyr, rr foram, v sft-sft, sbblky-amor.



1280
 1290
 1300 (1156.2)
 1310
 1320
 1330
 1340
 1350 (1191.6)
 1360
 1370
 1380
 1390
 1400 (1229)
 1410
 1420



Survey @ 1291.3m: 42.63° 129.6Az

MARL: lt olv gry, tr olv gry, 40-50% calc, tr slit, tr carb spk, tr glauc, tr vf pyr, rr foram, sft frm, occ mod hd, pred sbbiky.

Survey @ 1320.0m: 42.79° 129.8Az

MARL: lt olv gry, tr olv gry, 40-50% calc, tr slit, tr carb spk, tr glauc, tr vf pyr, rr foram, sft frm, occ mod hd, pred sbbiky.

Survey @ 1348.9m: 42.77° 129.3Az

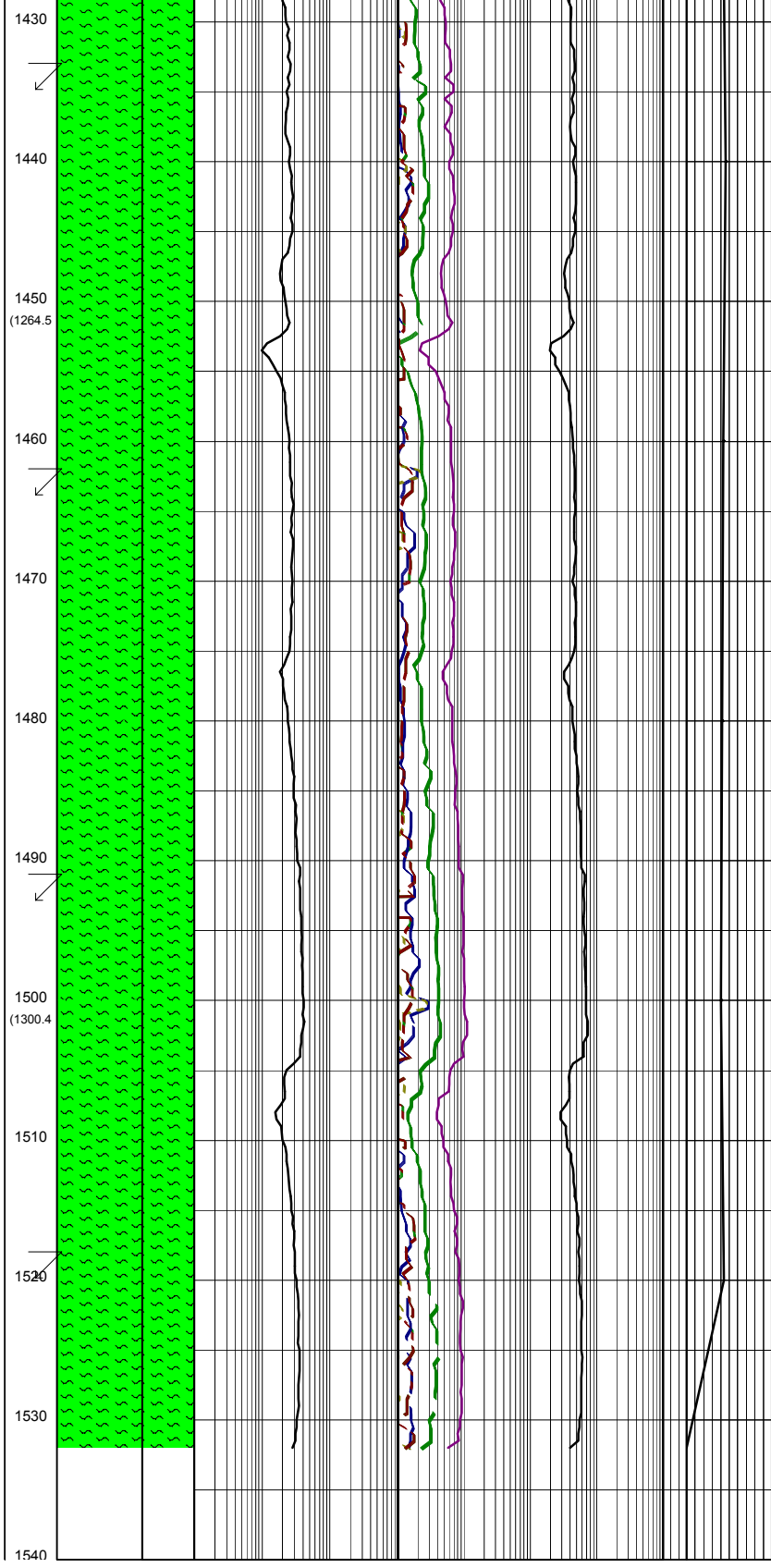
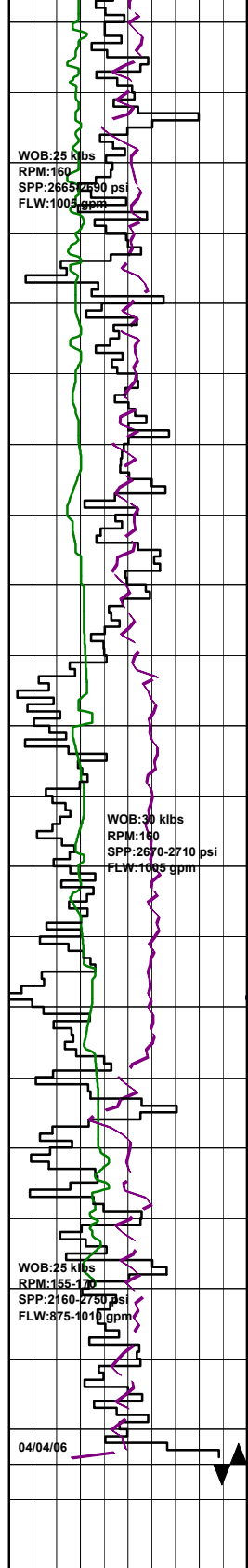
MARL: lt olv gry-olv gry, 40-50% calc, tr slit, tr f-med qtz grn, tr glauc, rr CLCAR, tr pyr, tr carb spk, sft frm, sbbiky, occ amor.

Survey @ 1377.7m: 43.56° 129.6Az

MARL: lt olv gry-olv gry, 40-50% calc, tr slit, tr f-med qtz grn, tr glauc, tr pyr, tr carb spk, sft frm, sbbiky, occ amor.

Survey @ 1406.3m: 45.07° 130.1Az

MARL: lt olv gry-olv gry, 40-45% calc, tr slit, tr glauc, tr fg pyr, tr carb spk, sft frm, sbbiky.



Survey @ 1435.0m: 45.15° 130.1Az

MARL: lt olv gry-olv gry,40-45% calc, slty, tr glauc, tr vf pyr, tr carb spk, sft-frm, com mod hd, sbblykly.

Survey @ 1463.6m: 44.21° 131.6Az

MARL: lt olv gry-olv gry,40-45% calc, slty, mnv vf aren, tr carb spk, rr pyr lam, frm-mod hd, sbblykly.

Survey @ 1492.3m: 43.35° 131.5Az

MARL: lt olv gry-olv gry,40-50% calc, slty, mnv vf aren, tr carb spk, rr pyr lam, frm-mod hd, sbblykly.

Survey @ 1520.8m: 43.60° 132.1Az

MARL: lt olv gry-olv gry,40-45% calc, slty, mnv vf aren, tr carb spk, rr pyr lam, frm-mod hd, sbblykly.